



## **Exhibitors at Charlotte Earth Day Celebration 2024**

**When?** April 20th, 2024 from 12-4pm

**Where?** Charlotte Museum of History, 3500 Shamrock Dr. 28215

Exhibitors are placed in 1 of 4 Knowledge Stations. Access this [google sheet](#) to find your knowledge station designation, add in the primary contact for the day-of, and check the box if you need a volunteer or tent for your booth.

### **Parking logistics:**

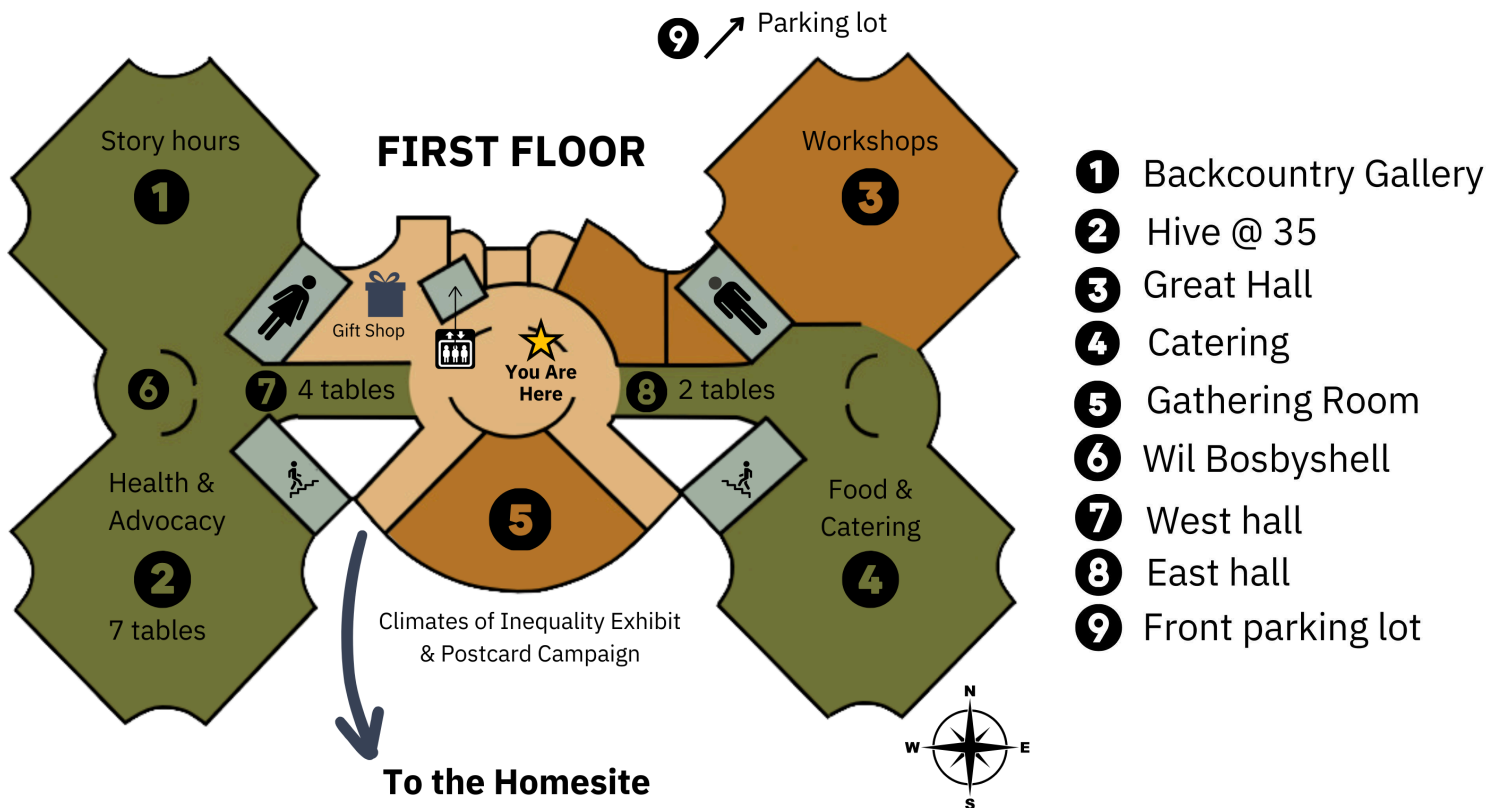
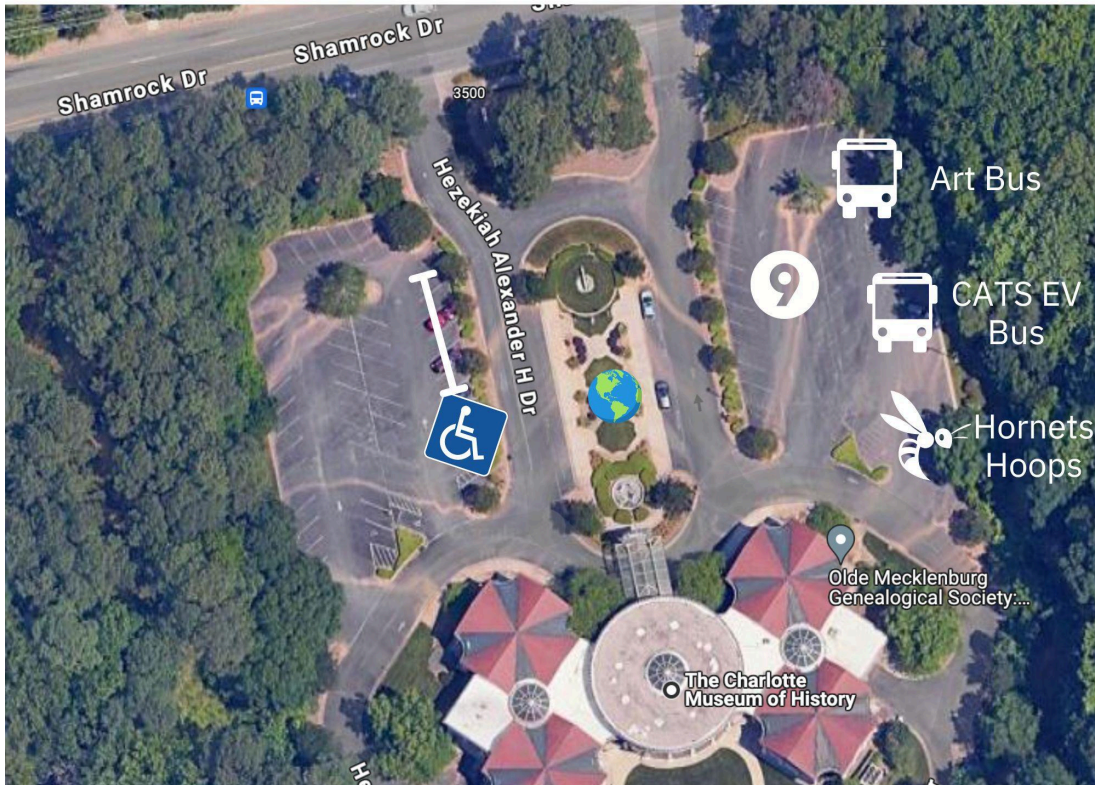
- Please check-in at the front desk between 10-10:30 am.
- The parking lot in front of the museum is reserved for volunteers, exhibitors, and handicap parking. (Attendees will use shuttles)
- Overflow parking is at a field between CMH and Aldersgate at 3600 Shamrock Dr.
- For exhibitors out on the field, you can use the road to Aldersgate (3800 Willard Farrow Dr.) to unload materials closer to your spot. See more information on the next page.

### **Reminders:**

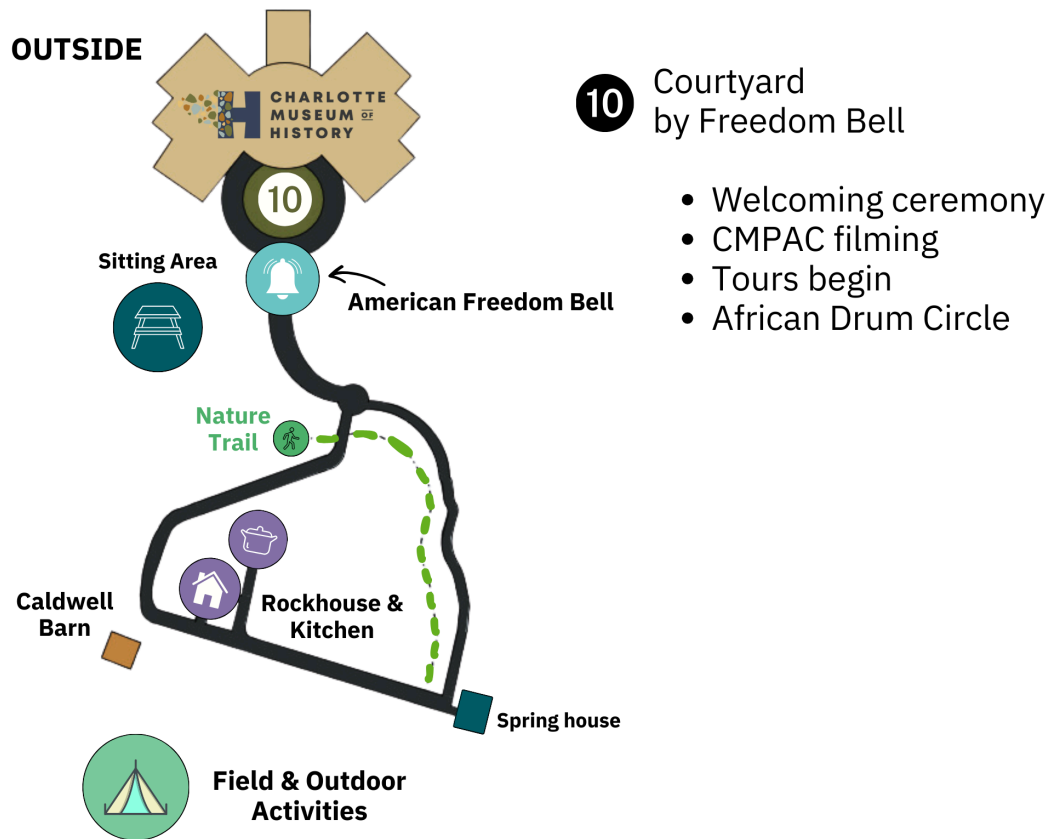
- Bring comfortable shoes, sunscreen, and a reusable water bottle.
- We have a limited amount of tables. Please let us know if you need one.
- Volunteers will wear a **yellow** shirt and a name tag. We will have plenty of volunteers throughout the day so you can also enjoy the event. Feel free to bring picnics/blankets.
- Text or call the volunteer leaders if you cannot find our person.
- Paid exhibitors will receive a free t-shirt and meal tickets.

First floor and the parking lot will be used for the Health/Advocacy exhibitors, and includes catering, workshops, and exhibitions.

### FRONT LOT

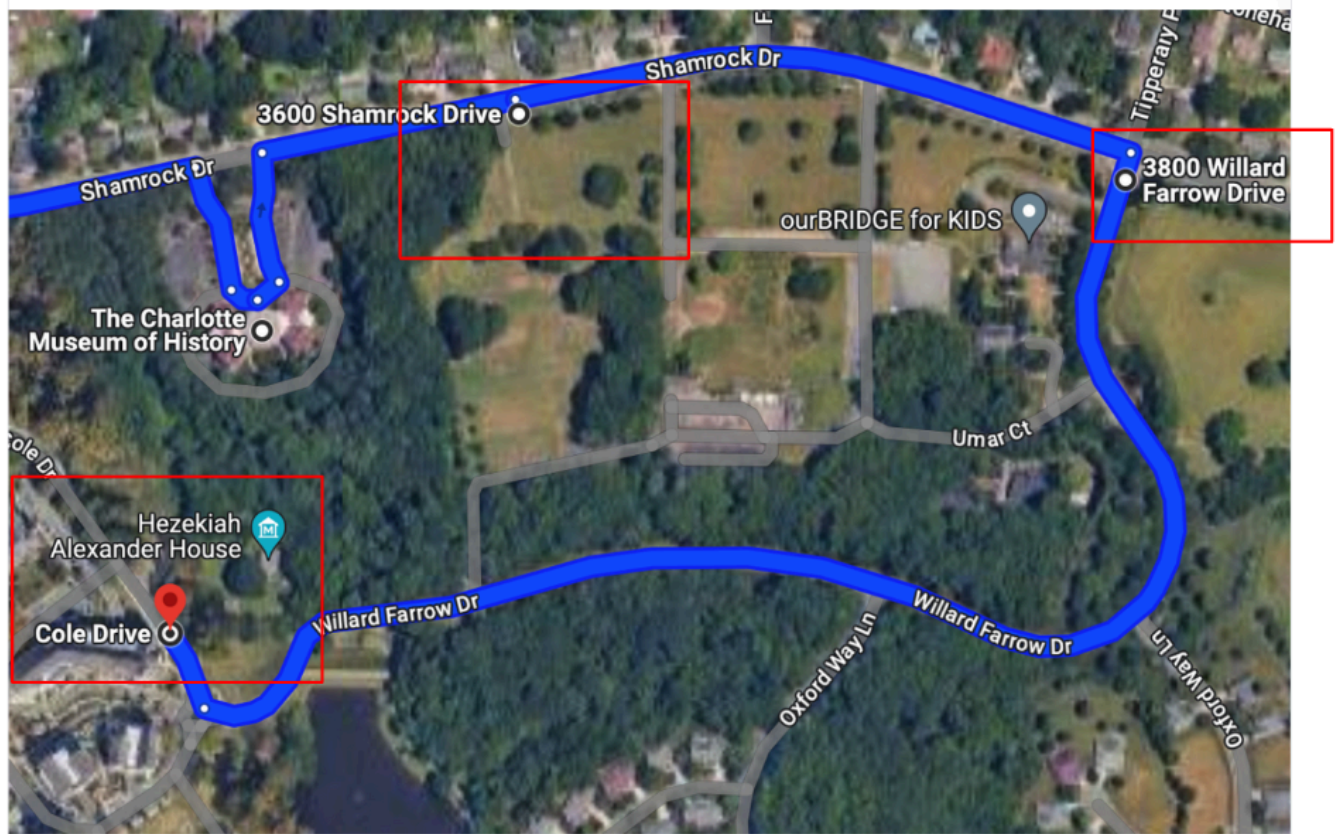


More programming happens behind CMH and out onto the Rockhouse Field. Exhibitors place their tent in the area designated for their Knowledge Station.





## EXHIBITOR MAP GUIDE



### EXHIBITOR FIELD ACCESS THROUGH 3800 WILLARD

For Air, Water, Land Knowledge Stations

- Exhibitors check in at the front lot
- Turn into 3800 Willard Farrow Dr. to Aldersgate
- Aldersgate attendee will be notified that you are an ED exhibitor
- Drive along Willard Farrow Dr. and take first turn at roundabout
- Signage and volunteers will show you where to unload
- Drive back out to the front lot or satellite field parking at 3600 Shamrock dr.